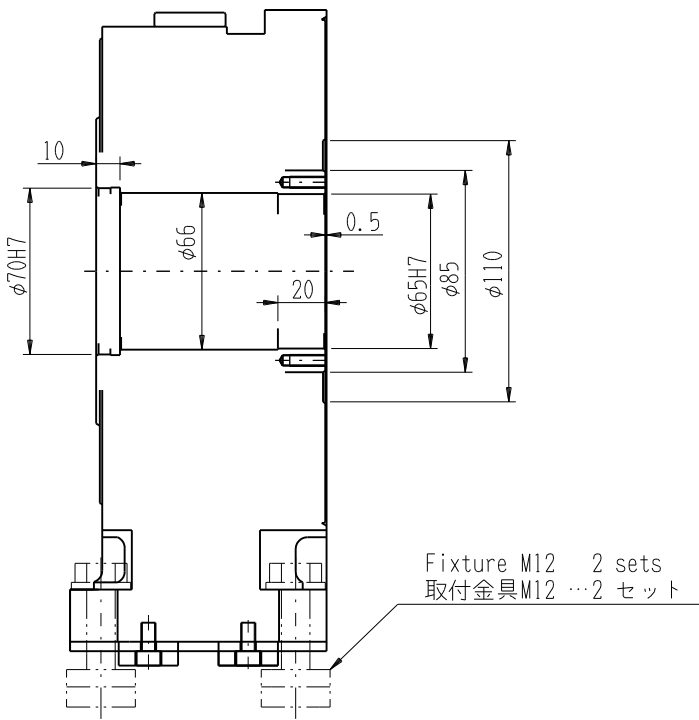
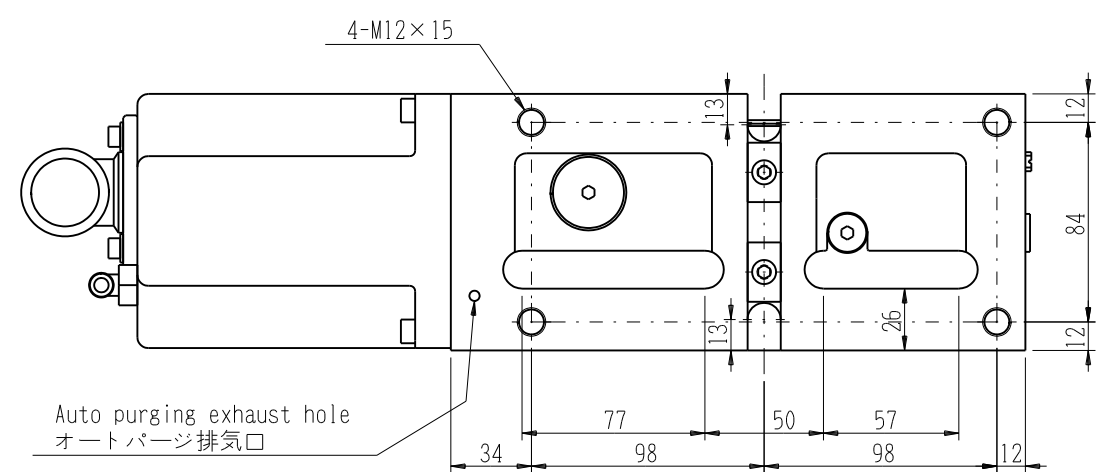
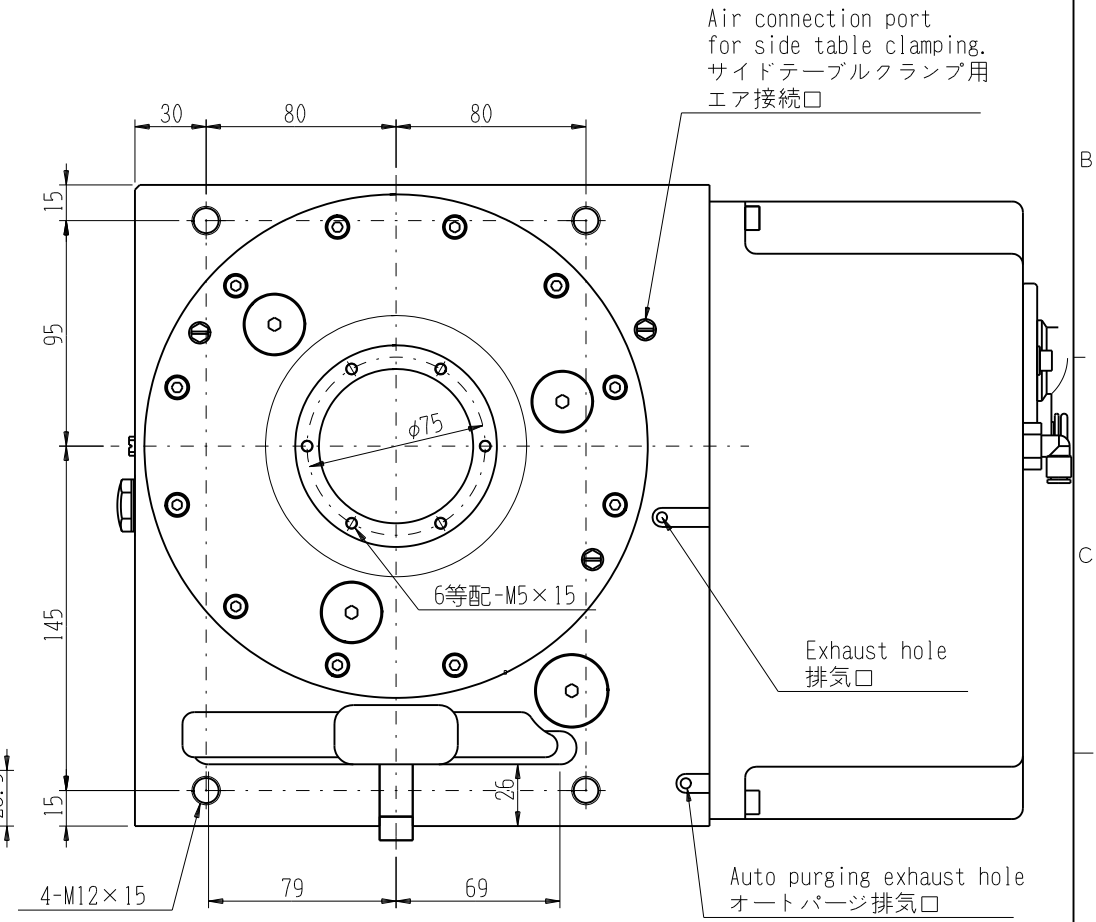
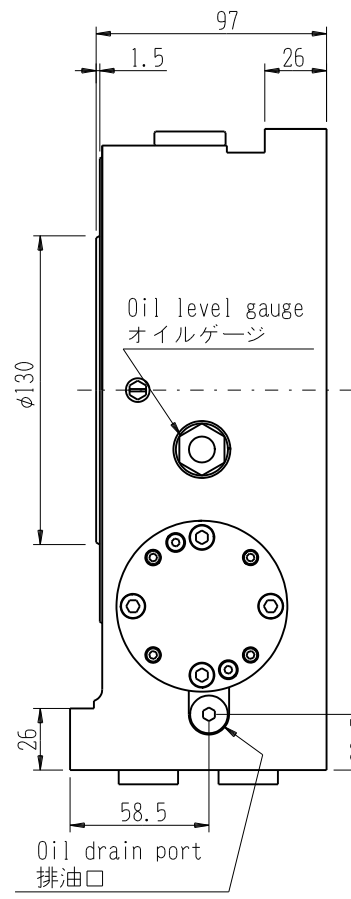
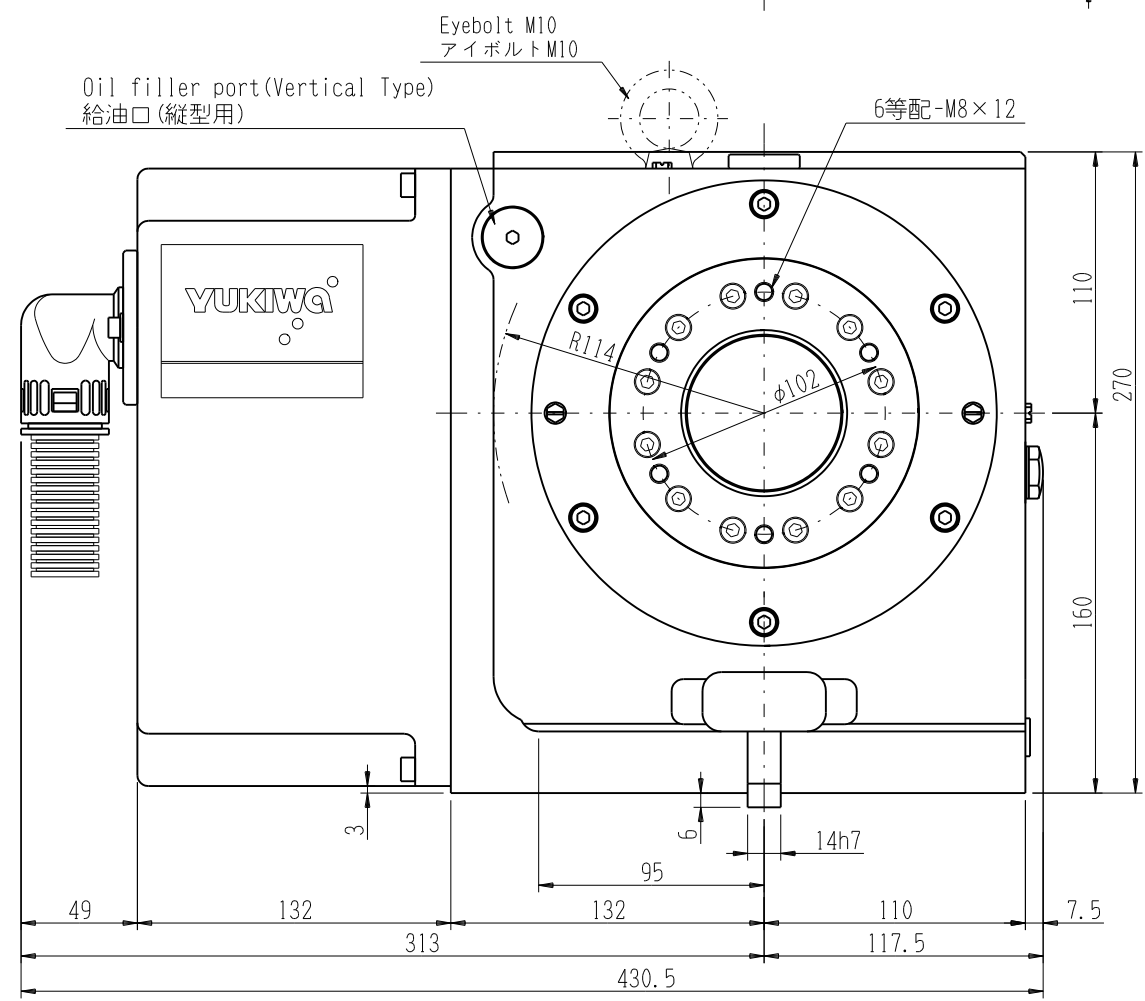
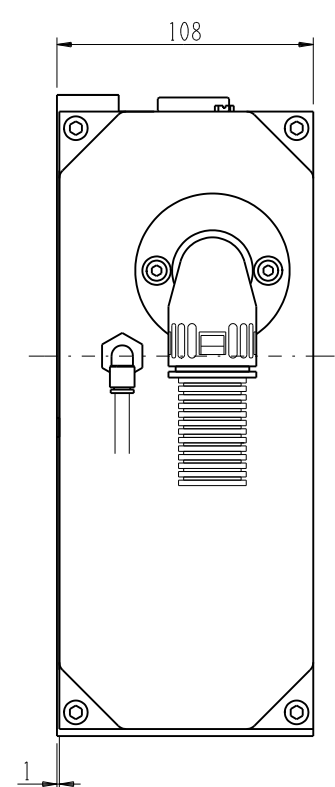
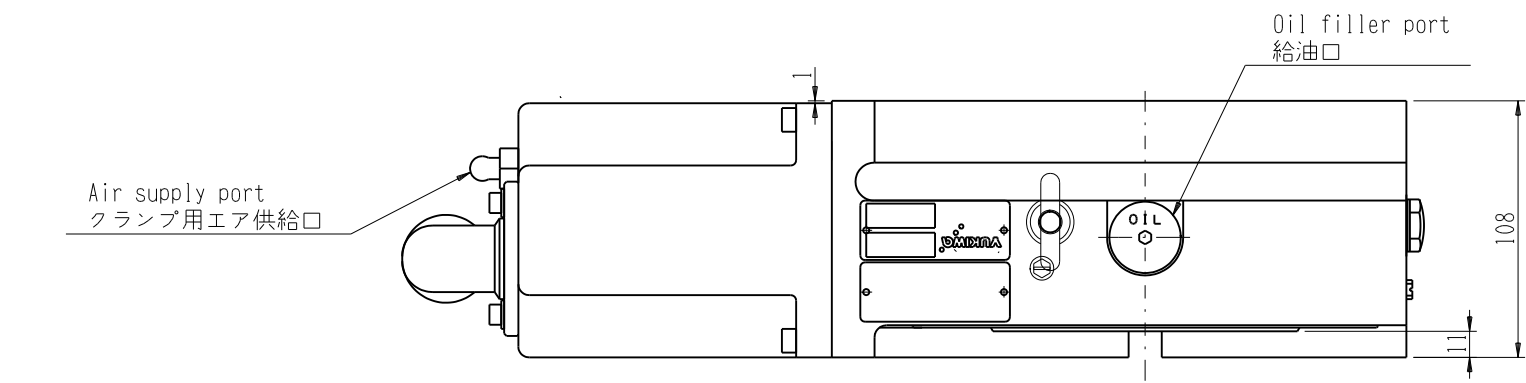


| | | |
|----------------------------|-------|-----|
| 指示がない限り、穴加工部分の寸法に別注する寸法許容差 | 区分 | 許容差 |
| 0.5以上 6以下 | ±0.05 | |
| 6を超え 30以下 | ±0.1 | |
| 30を超え 120以下 | ±0.15 | |
| 120を超え 400以下 | ±0.2 | |
| 400を超え 1000以下 | ±0.3 | |

| | | |
|---|---|------------------------|
| AC servo motor ACサーボモータ | AC5-30A | SANYO R2AA08075FXPGME6 |
| | BCM31/32 | |
| | BCM33 | SANYO R2AA08075FXRS4M6 |
| Total reduction ratio 総合減速比 | 1/90 | |
| Max. number of revolutions テーブル最高回転数 | 33.3min ⁻¹ (ε-φ3000min ⁻¹) | |



For table clamping, connect air at a pressure of 0.5 to 0.7 MPa through a filter 40 μm or less. クランプ用エアは、40μm以下のフィルタを通した0.5~0.7MPaのエアを接続してください。

| REVISION | DATE | NAME |
|----------|------|------|
| | | |
| | | |

| | | | | |
|-------------------|---------------|--------------|----------------|---|
| HEAT TREAT (熱処理) | APPROVED (承認) | CHECKED (審査) | DRAWN (製図) | PRODUCT NAME (製品名) |
| | | | 21.5.12 佐藤仁 | CNC Rotary Table CNC円テーブル TNC200L-AC5-30A -BCM31/32/33 |
| YUKIWA SEIKO INC. | | | | PART NAME (部品名) Outside drawing 外観図 |

| | |
|----------------|------------|
| MATERIAL (材質) | SCALE (尺度) |
| TNC200L-D01-K7 | 1/3 |

| | |
|----------------|--|
| DWG. No. (図番) | |
| TNC200L-D01-K7 | |

AC5-30A
BCM31/32/33